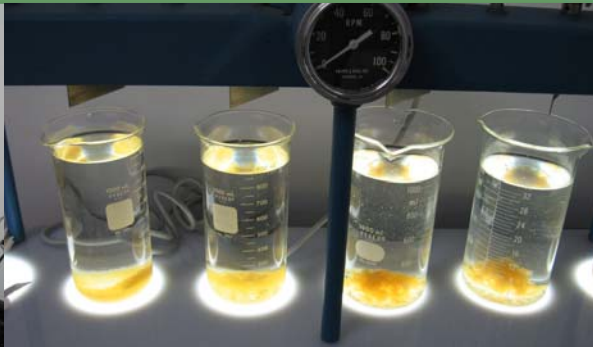


# Industrial Wastewater



**RHMGE Engineers** works closely with a wide range of industrial clients to help address the environmental issues affecting their businesses. With our knowledge of wastewater treatment processes and regulations, we help industrial clients reduce wastes and meet regulations for wastewater discharges. RHMGE draws on the skills of our highly experienced professionals who can take the project from planning through construction and operations with an innovative approach tailored to meet our client's operations, objectives, and budgets. The services we offer include wastewater flow and characterization studies, treatability studies, preparing permit applications and reports, preliminary and final design services, and providing on-site operational assistance and troubleshooting. We help achieve compliance with local and federal regulations while improving our client's bottom line.

## INDUSTRIES SERVED

- Metal Finishing
- Meat Processing
- Canneries
- Food Processing
- Pharmaceuticals
- Stockyards/Feedlots
- Dyeing and Finishing
- Minerals and Mine Drainage
- Electrical and Electrical Components
- Electroplating
- Dairies
- Manufacturing
- Pulp and Paper
- Textile Mills
- Solid Waste

## SERVICES

- Wastewater Flow and Characterization Studies
- Waste Reduction/Reuse Studies
- Treatability Studies
- Feasibility Studies
- Sewer System Evaluation Studies
- Treatment Facility Evaluation Studies
- Design/Preparation of Plans and Specifications
- Permitting
- Construction Administration and Inspection
- Design/Build